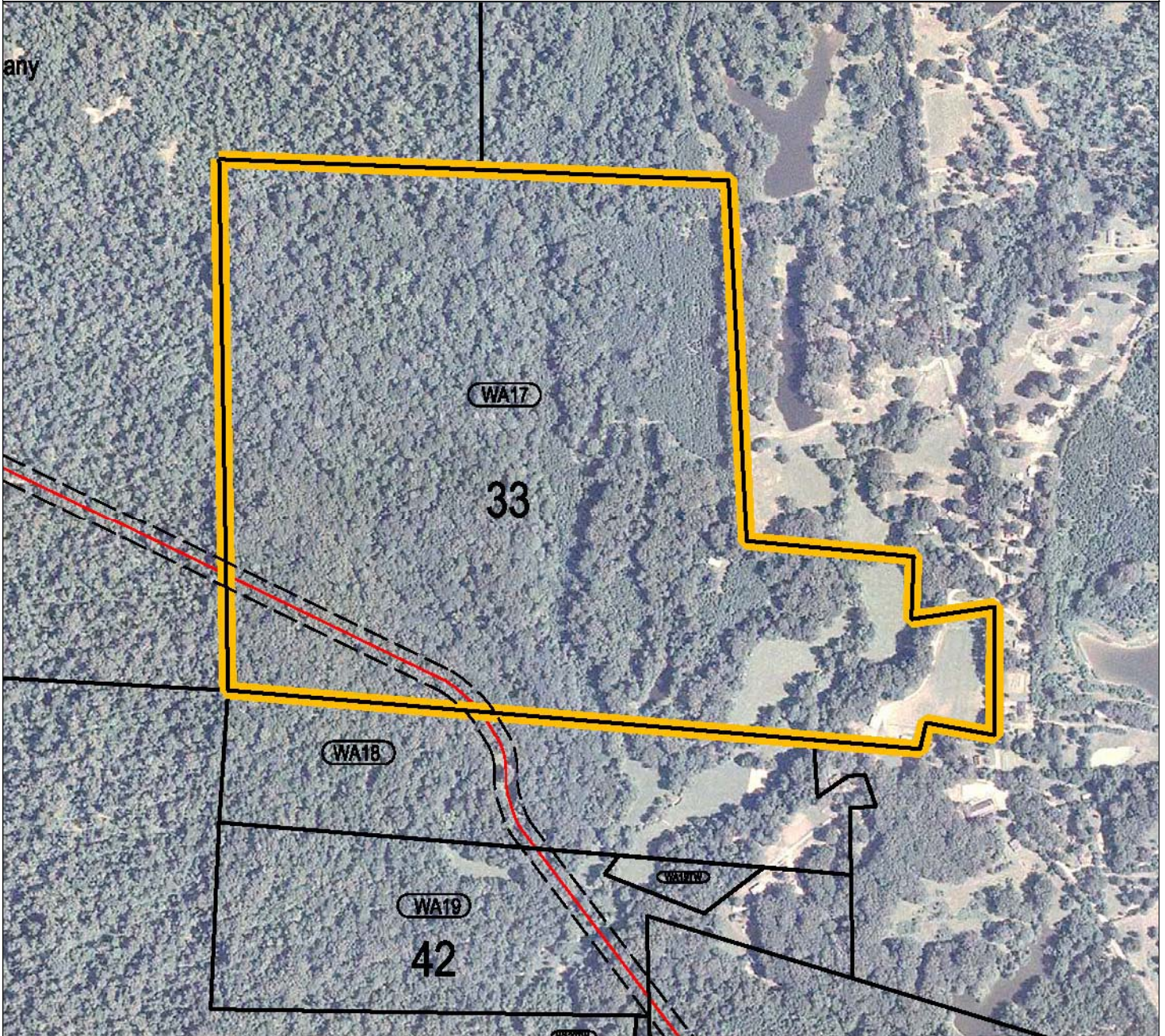


Washington County, OK
T14N, R3E, Section 33



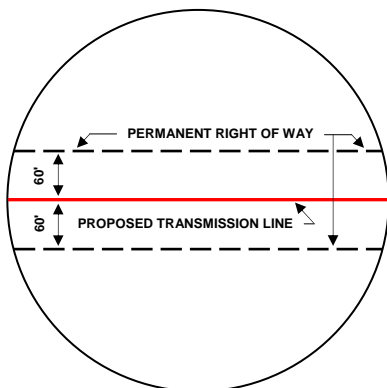
Doyle
LandServices, Inc.

Property Of
Capdeville Corporation
Located In T14N, R3E, Section 33

— PROPOSED TRANSMISSION LINE TRACT NUMBER
 PERMANENT RIGHT OF WAY AFFECTED TRACT BOUNDARY

Date: September 9, 2005	Transmission Line Length (Feet): 1503.15
Scale: 1" = 800'	Total ROW Acreage: 4.14
ROW File Name: WA 17	Drawing Name: WA 17.jpg
Drawn By: GEC	Checked By: JBD

Note: Actual location of easement is determined by the transmission line as installed. Property boundaries shown are based on county assessor's maps and transmission line centerline location is based on GPS data.



DRAWING LEGEND